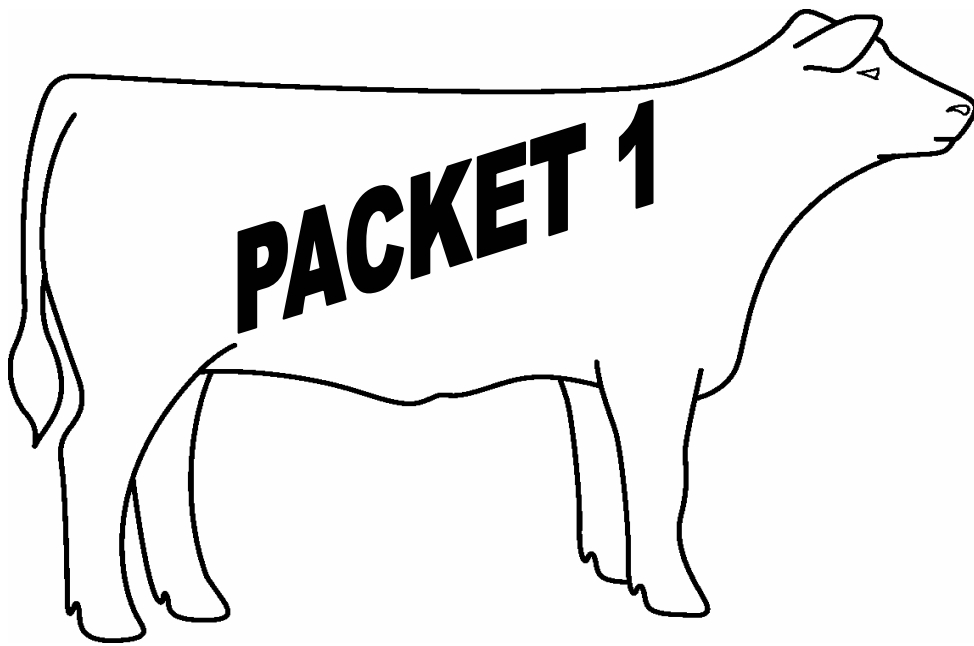


# New England 4-H Beef Program



**2008**  
**Eastern States Exposition**

## **OBJECTIVES FOR THE NEW ENGLAND 4-H PROGRAMS**

The 4-H program at The Big E is a cooperative effort with the Eastern States Exposition and the Cooperative Extension Systems of the New England States working together toward common objectives. These objectives are:

1. To motivate and recognize the achievements of 4-H members and their volunteer leaders.
2. To give the general public attending The Big E a better understanding of 4-H educational efforts including the organization, program, and accomplishments.
3. To provide educational experiences for 4-H members that are not available in the individual states.
4. To make 4-H programs and activities visible to the general public across the grounds of The Big E.
5. To expand the image of 4-H as a total diverse youth development program.
6. To ensure quality educational activities both for the 4-H participant and the general public.
7. To identify 4-H as an integral part of the Cooperative Extension System and the land grant universities of New England.
8. To involve youth as equal partners in full decision-making roles at all levels of program decision-making.

## 2008 RULES AND REGULATIONS

### PARTICIPATION

1. Participation in the 4-H Beef Show is for bonafide 4-H members of New England and Dutchess County, New York, who are at least 12 but have not turned 19 years of age on or before January 1st of the current year.
2. State Representation: If 4-H club membership is held in more than one state, and the same project is taken in both states, the 4-H member must compete and represent the state in which they reside. If the project is only taken in one state, the 4-H member should represent that state.
3. 4-H Members accepted in the beef show must stay on The Big E grounds throughout the show, and reside in the Moses Dormitory unless excused by the Superintendent. 4-H participants, family members, and leaders are expected to abide by all show and dormitory rules. Smoking is not permitted at any time.
4. All members must participate at such times and places as the superintendent may direct. In case of refusal, the exhibitor shall be barred from showing and selling at the auction, in addition premium checks and awards will be forfeited if exhibitors have already shown.
5. Members must own their steers beginning no later than February 1, 2008 and heifers no later than May 1, 2008. Entries from the state office to The Big E MUST BE POSTMARKED NO LATER THAN FEB 10 FOR STEERS AND MAY 15 FOR HEIFERS. Each member may enter a total of three (3) animals in the 4-H Beef Show regardless of gender. Only one animal will be allowed in the fitting and showmanship contest. **Members are prohibited from caring for any other animals outside of the 4-H Beef program. Cooperation between program participants is encouraged. Please note that 4-H members who are not part of the current year's program may not assist in preparing or caring for animals involved in the program.**
6. Junior Leader Program - One 4-H member may be chosen by their state that does not have an animal at The Big E. The member must meet above age requirements. The Junior Leader will participate in all contests except Fitting and Showmanship and the type show. The Junior Leader's name must be submitted to The Big E prior to/on August 25<sup>th</sup> postmark.
7. **No cars, trucks, or other non-camper vehicles are allowed to be used as overnight accommodations on the grounds of The Big E. Any vehicles used in this manner will be towed. Tents are not allowed inside the fenced-in area. As precedent is currently set in certain project areas, State approved volunteers for all 4-H animal programs may stay overnight in the barns where the appropriate animals are housed. Volunteers using canvas-sided/pop-up/tent campers will be required to sign a waiver accepting all responsibility for any theft, safety and/or personal liability. Failure to follow all rules for this show will result in disqualification and forfeiture of all awards and the right to sale an animal at the sale.**

### ENTRIES

1. Entry forms are available from 4-H Staff, local 4-H club leaders or online at [www.thebige.com](http://www.thebige.com). Entries close February 1, 2008 for steers and May 1, 2008 for heifers. The entry application must be filled out completely, including staff signatures and official Big E ear tag number for steers.
2. **Policy regarding cases of loss or damage. All exhibits will be under the direction of Eastern States Exposition Management, who will exercise every reasonable care in the protection of exhibits. In no case will Eastern States Exposition or management be responsible for any loss or damage that may occur. Each exhibitor will be solely responsible for any loss, injury or damage to any animal; or loss, injury or damage done by or arising from any animal exhibited by him/her and shall indemnify Eastern States Exposition, New England 4-H Council, 4-H Project Committee, or a New England State 4-H Program against legal or other proceedings in regard thereto. Exhibitor signature of the 4-H Entry Form for Heifers and/or Steers will indicate total compliance to this ruling**
3. Members are required to furnish feed and management records for the animal they enter. **ANIMALS WITHOUT COMPLETE RECORDS ARE INELIGIBLE FOR COMPETITION. MEMBERS MUST USE THE MOST RECENTLY REVISED RECORD** to start the project. The feeding and business records will begin no later than February 1 for steers. Records must be reviewed by the local 4-H club leader, and 4-H Staff with youth responsibilities, and signed by the above indicating that they have approved the preparation of the record. A completed record with appropriate signatures must be turned in at the weigh-in.
4. Arrival and departure times will be listed in the schedule of 4-H Activities and distributed by the 4-H Coordinator. Animals will be permitted to leave the grounds following the 4-H Beef sale under the direction of the superintendent and upon presentation of a duly signed and official bill of sale/invoice or release.
5. 4-H Beef club members shall register at the 4-H Headquarters (Moses Building) upon arrival and hand in a

completed health form. Each member must obtain from his state or county leader a health form to be completed and signed by his parents or guardian prior to his arrival.

6. Any member who willfully falsifies the weight and birth date or report of his/her animal shall forfeit all awards and trophies and be ineligible to enter future shows. Use of muzzles during show is prohibited. The use of any hair pieces is prohibited.
7. 4-H participants are responsible for their animals at all times. Neither The Big E nor the 4-H Beef Management Committee assumes responsibility for loss or damage to livestock or injury to persons.
8. NO DOGS OR OTHER PETS ALLOWED in the barn at any time.
9. In the case of a major emergency on the fairgrounds, all 4-H members, leaders, and chaperones are to report to the front lawn of their respective state buildings along the Avenue of States and remain there until released by the 4-H Dormitory Supervisor except those in the Mallary Complex. Those in the Mallary Complex should immediately find their barn chaperone and listen to the public address system for further instructions.

MEALS Meals and lodging are furnished by the Exposition. Mattresses and cots are provided. Members must bring their own bedding and towels.

DORMITORY All dormitory rules must be obeyed. For more information on dormitory rules visit [www.thebige.com/agriculture/4-H](http://www.thebige.com/agriculture/4-H)

APPROPRIATE ATTIRE Activity attire will be "CLOTHES NEAT, CLEAN AND PRESENTABLE. NO SNEAKERS". While showing, members will be disqualified if they are wearing shorts, clothing advertising a farm or breed, and/or other clothing that the superintendent considers inappropriate for the event. Delegates may not appear in the barns or on the grounds barefoot. Appropriate attire is required at all 4-H Beef Show events, including the sale. In the interest of safety, sneakers may not be worn in the show.

THE COMMONWEALTH OF MASSACHUSETTS 2008 ANIMAL HEALTH REGULATIONS: Second Packet only.

#### EQUIPMENT, STALLS AND FEED

1. Stalls will be assigned by state groups. Only animals and members accepted for competition will be permitted on the grounds. Unauthorized appearance of animals on the grounds, except in those areas approved by the superintendent, are prohibited. Animals must be tied with both a neck rope and halter.
2. Bedding and hay will be provided. Members should bring all equipment needed to properly care for their animals including halter, brushes, combs, feed boxes and water buckets.
3. The use of fans and mechanical groomers are permissible, provided such use has the prior approval of the superintendent. All electrical equipment must be properly grounded.
4. Only awards at this current show/program can be used for decorations.
5. Stall and tack area must be kept clean, neat, well ordered at all times.

#### SHOW CONTESTS

1. The animals will be judged at a time to be announced in the schedule. Rope or leather halters may be used in Type and Fitting and Showmanship at the discretion of the 4-H member.
2. An identification number will be provided by the superintendent and must be worn during the type show, the fitting and showmanship contest, and the sale. It is the responsibility of the 4-H member to display the correct number for the contest and animal being exhibited.
3. No animal may be exhibited in competition that cannot be managed and led in the show ring by its owner alone. Exhibitors only are to present their animals in the sale ring. Exceptions to rules must be approved by the Superintendent)

**Any of the above rules may be changed as deemed necessary by the Management Committee. The interpretation of all the 4-H Beef rules will be determined by the 4-H Beef Management Committee.**

The Cooperative Extension System 4-H Youth Development program prohibits discrimination in education, employment, and in the provision of services on account of race, ethnicity, religion, sex, age, marital status, national origin, ancestry, sexual orientation, disabled veteran status, physical or mental disability, mental retardation, [and] other specifically covered mental disabilities, [and criminal records that are not job related].

## 2008 4-H BEEF ACTIVITY ADDITIONAL STEER SHOW RULES

1. Classes will be broken according to weight into lightweight, mediumweight and heavyweight classes. **All steers regardless of breed will show together.** Champion and Reserve Champions will be selected from each weight division. An overall Grand Champion and Reserve Grand Champion will be selected from the previous champions in the three weight divisions. The Management committee shall determine the class into which the animal shall be accepted for showing based on weights taken at the weigh-in.
2. All steers must have an official Big E ear tag attached to the left ear of the animal on or before the final date of entry. A representative of the 4-H Beef Management Committee or his representative must attach the tag to the ear of the animal. In case a tag is subsequently lost out of the ear of an animal, it is the responsibility of the 4-H Club member to report the fact to the person who inserted the tag, within 24 hours after the loss is noticed; failure to do so will be cause for disqualification of the animal.
3. Prior to feeding or watering and immediately upon being unloaded at The Big E, records will be checked and steers will be officially weighed. **STEERS WEIGHING LESS THAN 900 LBS, and/or for any reason not approved by the Superintendent, AND/OR NOT HAVING COMPLETE RECORDS WILL BE DISQUALIFIED.** Exhibitors should be aware of shrinkage, which may occur as a result of hauling.
4. All steers must have been born on or after January 1 of the previous year.
5. Each animal is subject to being inspected by a veterinarian or other competent authority, as may be determined by the Chairman, for the purpose of verifying the age of the steers; steers with two permanent teeth shall automatically be entered into the heavyweight class, regardless of their weight. If steer exceeds two (2) permanent teeth, the steer is disqualified. **ALL STEERS MUST BE NATURALLY POLLED OR DEHORNED WITH NO HORN REGROWTH.** No permanent or temporary nose rings are permitted during the 4-H Beef shows. Health papers will be checked and animals are subject to being checked for health conditions upon arrival. No animal is allowed in the barn until health papers and health status has been checked by the representative of the Massachusetts Department of Agriculture.

### AUCTION

1. The auction will take place at the Exposition grounds at a time to be announced in the schedule. Each entry in the auction will be charged a commission of the sale price, which will not exceed 3%. All funds received from sale commissions are used to help defray expenses of the beef show over and above the appropriation made by the Exposition.
2. Members must sell their steers in the auction. A good lead halter of at least ½" rope with a min. of 5 foot lead must be on the steer when sold.
3. Should the amount paid for any steer on an original final bid exceed \$7500, 10% of the gross sale amount over \$7500 will be contributed to the ESE Foundation to establish an endowment for a scholarship available to any 4-H Beef Exhibitor.
4. A bid of \$10,000 as the original final bid will be considered a maximum bid. Any amount exceeding \$10,000 will be contributed to the ESE Foundation to establish an endowment for a scholarship for any 4-H Beef Exhibitor.
5. Liability for steers rests with the owner until the animal is struck off by the auctioneer after which time liability becomes the responsibility of the buyer.
6. Sale Terms are as follows: Buyer's record is identified by bidder number at the time of sale. A bill of sale is issued upon payment. **ALL BILLS SHALL BE PAID TO THE TREASURER ON OR BEFORE OCTOBER 1, 2008.** The Treasurer will issue checks to the sellers by October 15 **PENDING RECEIPT OF MONEY FROM BUYERS.** By act of entering in the 4-H Steer Show at The Big E, 4-H Club members, their parents, guardians, leaders and agents thereby indicate their full accord with the terms of the 4-H Beef Auction.

### EQUIPMENT AND FEEDING DIRECTIONS:

1. Set of scales for weighing feed
2. Brush & curry comb
3. Salt/mineral lick
4. Water before steer at all times
5. Feed grain & hay twice per day
6. Do not put in stanchion, but have a box stall ready when the steer arrives at the farm. Keep the stall clean & well bedded.

### THE FOLLOWING ARE FOUR SUGGESTED FEED RATIONS:

- A. 150# 14% dairy ration  
150# ground or crimped corn  
300# Total
- B. 165# Whole corn & cob (ground)  
105# Oats ground or crimped  
30# Protein supplement (linseed pellets)  
300# Total
- C. 150# Cracked corn  
100# Crimped oats  
50# soy bean meal or pellets  
300# Total
- D. 175# Coarsely ground ear corn  
65# Crimped oats  
60# Soybean meal or pellets  
300# Total

Begin by feeding 2 pounds of an above mixture twice a day for a total of 4 pounds per day. This should be continued for a week, then increase each feeding a half or 1 pound a day for 2 or 3 days and let this suffice for a week. Then increase again as the steer's appetite dictates.

The best quality of hay, leafy and green, will give best results. A little handful in the morning and evening will be just right. His appetite will determine the amount. Do not permit him to waste the hay. In your feeding operation, your calf when on full grain should not eat over 2 or 3 pounds of hay per day.

If corn silage is available, a double handful mixed in the grain morning and evening is fine to induce the steer to eat. No feed should be left in the feed box while getting onto full feed, from one feeding to the other. Plenty of water to drink and trace mineral/salt mix before the steer is very essential. (may be loose or in blocks)

HALTER BREAKING - this is where the fun begins. If the members become acquainted with their steer by quiet handling with no abuse whatsoever, they will soon have his confidence and things will go along smoothly. In 2 or 3 weeks after the steer has become acquainted with his new home and surroundings, the halter can be put on and he can be tied up for a few hours at a time. When he becomes used to being tied up, then he can be taken out on a longer rope to be given the first rudiment of leading. Some will learn quickly and some will be stubborn, but in all, education, patience and carefulness must be your motto.

## 2008 4-H BEEF ACTIVITY ADDITIONAL HEIFER SHOW RULES

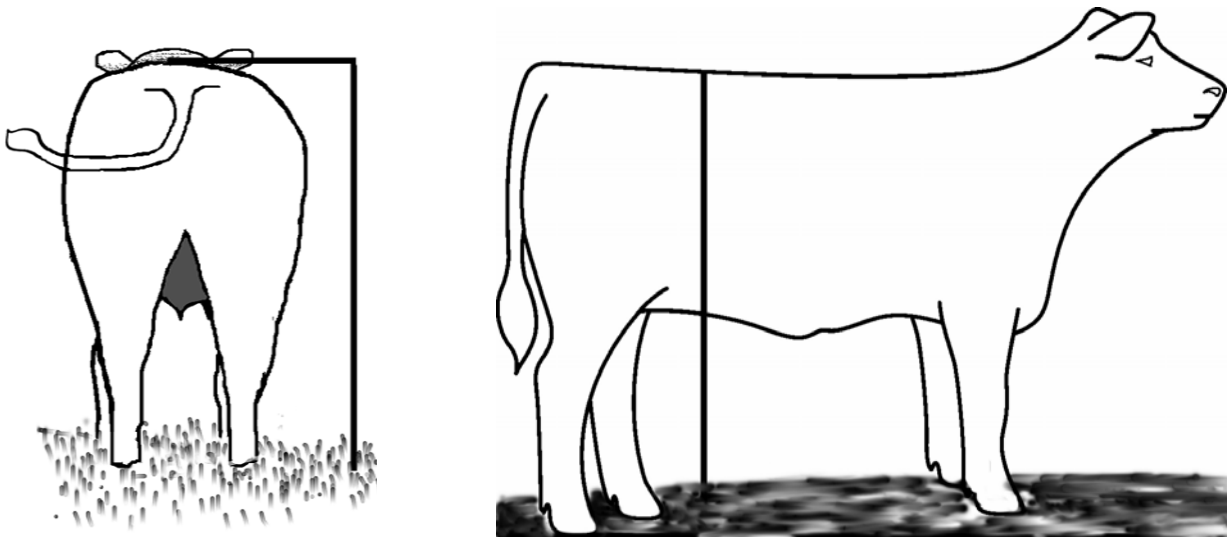
1. Registered heifers and commercial heifers can be shown. Registered heifers must be registered with the proper breed association and meet the show criteria for their breed. (Example: Angus with American Angus Association). Registered heifer classes will be broken into separate breeds if 5 or more heifers are entered. Breeds with less than 5 heifers entered will be shown in All Other Breeds (AOB) Class. Un-registered or non-registerable or crossbred heifers are considered commercial heifers, and will be shown in the commercial heifer class.
2. The 4-Her must own or have signed lease agreement by May 1 the year of the show (Example: 5/1/2008 for 2008 show). The heifers must also be entered by May 1 of the current year. This procedure is identical to that used to enter steers in the show with exception of the entry date. Registration or record certificate or lease agreement determines ownership.
3. Class age breakdowns are as follows:
  - i. Senior Calf 9/1 - 12/31/07
  - ii. Summer Yearling 5/1 - 08/31/07
  - iii. Spring Yearling 3/1 - 04/30/07
  - iv. Junior Yearling 1/1 - 02/28/07
  - v. Senior Yearling 9/1 - 12/31/06
4. All heifers will be shown in rope or leather halters for type classes and fitting and showmanship classes.
5. Heifers and steers will be shown together in the same classes for fitting and showmanship contest.
6. Exhibitors of heifers must attend and participate in all regular contests.
7. A **PHOTOCOPY** of the registration must be included with the entry for all heifers (including leased animals), when it is sent in May.
8. There will be no entry fee for heifers.
9. Each animal is subject to being inspected by a veterinarian or other competent authority, as may be determined by the Chairman, for the purpose of verifying the identity of animals. No permanent or temporary nose rings are permitted during the 4-H Beef shows. Health papers will be checked and animals are subject to being checked for health conditions upon arrival. No animal is allowed in the barn until health papers and health status has been checked by the representative of the Massachusetts Department of Agriculture.
10. Horned or heifers exhibiting horn regrowth are not allowed- with the exception of breeds where horns are accepted (i.e. registered Scottish Highland cattle, registered Longhorn cattle and horned Herefords).

## MEASURING HIP HEIGHT

Hip height measurements are REQUIRED for heifer and steer projects. Heifers and steers must chart hip heights.

Measurements should be taken with the project animal standing squarely on all four feet, head tied up and on a hard level floor. Measure from across the back directly over the point of the hips, to the floor. See drawings below. Care should be taken to be sure the back is level and the measuring line is straight up and down.

Hip height measurements taken at a known age is an estimate of the frame size which in turn is an indicator of the rate of maturity. The frame-scoring concept came about with the need to estimate the weight at which animals would reach



Choice grade in the feedlot. This would enable feed lot operators to purchase feedlot cattle at weaning and estimate with reasonable accuracy the weights at which they would finish. Some feed lots feed for customers that prefer carcasses as light as 500# which would require an animal that finishes at 900# live weight or a frame 3 feeder. Others prefer a 750# carcass or a live weight of 1250#, a frame 6 animal.

Frame Score Chart for Males

<u>Frame</u>	<u>9 mo.</u>	<u>12 mo.</u>	<u>15 mo.</u>	<u>18 mo.</u>	<u>24 mo.</u>
3	42"	45"	47"	48"	49.5"
4	44"	47"	49"	50"	51.5"
5	46"	49"	51"	52"	53.5"
6	48"	51"	53"	54"	55.5"
7	50"	53"	55"	56"	57.5"
8	52"	55"	57"	58"	59.5"

**4-H BEEF BREEDING HEIFER NON-OWNERSHIP CERTIFICATE**

NAME OF ANIMAL _____	DATE ANIMAL BORN _____
NAME OF SIRE _____	NAME OF DAM _____
REGISTRY/BREED _____	REG. NO. _____
COMMERICAL HEIFER _____	BREED MAKE-UP _____
TATTOOS: LEFT EAR _____	RIGHT EAR _____
LEASOR'S SIGNATURE _____	DATE _____

1. The animal must be leased prior to May 1, and submitted to the appropriate 4-H Agent.
2. All animals must be properly identified by legible tattoo.
3. The leasee (4-H member) shall bear all livestock expenses normally incurred in raising such an animal, including transporting and or exhibiting, for the duration of this agreement.
4. The leasee shall breed the animal at the direction and expense of the owner, if necessary.
5. The leasor (owner) agrees to assume all legal responsibilities as owner of the animal listed and will not hold the leasee liable for any injury or death loss to the animal, except those due to negligence on the part of the leasee.
6. Leasor (owner) agrees to allow the leasee (4-H member) to exhibit above animal at 4-H fairs and The Big E and other fairs BOTH owner and 4-H member agree to.
7. A leased animal may only be exhibited by the 4-H member during the time this agreement is in effect.

By signing this agreement, owner, 4-H member, parents and 4-H leader agree to the terms stated above and are officially designating this animal as his/her 4-H project.

NAME OF 4-H'ER _____	4-H LEADER'S NAME _____
ADDRESS _____	ADDRESS _____
CITY ZIP _____	CITY ZIP _____
MEMBER'S SIGNATURE _____	LEADER'S SIGNATURE _____
PARENT/GUARDIAN _____	4-H STAFF _____
ADDRESS _____	ADDRESS _____
CITY _____	CITY ZIP _____
TELEPHONE _____	TELEPHONE _____

2008 4-H BEEF HEIFER SHOW ENTRY APPLICATION  
NEW ENGLAND 4-H PROGRAM – THE BIG E

This entry is made in accordance with the Rules and Regulations governing this program. DETACH IT from the rules and submit it to your club agent.

PRINT !!! Do not omit any information requested.

FULL GIVEN NAME \_\_\_\_\_ TEL. NO. \_\_\_\_\_

COMPLETE MAILING ADDRESS \_\_\_\_\_

CITY \_\_\_\_\_ STATE \_\_\_\_\_ ZIP \_\_\_\_\_ E-MAIL \_\_\_\_\_

MEMBER'S BIRTHDATE \_\_\_\_\_ AGE AS OF \_\_\_\_\_ SEX \_\_\_\_\_ T-Shirt Size \_\_\_\_\_  
Month Day Year 1/1/2008

Breed \_\_\_\_\_ Reg. No. \_\_\_\_\_ Name of Breeder \_\_\_\_\_  
Include breeder's farm name (if known)

Commercial Heifer Tattoo \_\_\_\_\_

Tattoo: Right Ear \_\_\_\_\_ Left Ear \_\_\_\_\_

Heifer's Name \_\_\_\_\_ Birth date of Animal \_\_\_\_\_

Did you breed this calf yourself? \_\_\_\_\_ if not, date you acquired her? \_\_\_\_\_

If purchased, from whom? \_\_\_\_\_

We have read the rules and certify that the facts contained herein are true. The applicant meets the eligibility requirements of the rules and agrees to participate in all activities of the 4-H Beef Show at the Exposition.

\_\_\_\_\_  
Signature of 4-H Club Member

\_\_\_\_\_  
Signature of Parent or Guardian

\_\_\_\_\_  
Signature of 4-H Local Club Leader

\_\_\_\_\_  
Signature of 4-H Staff

\_\_\_\_\_  
Signature of Committee Representative

Original Entries must be received at State office no later than May 1 for heifer projects.

Entries must be postmarked by May 15 to the Exposition. A photocopy of the registration papers must be sent with this entry. If the animal is being leased, a photocopy of the lease agreement must also be included.

The Cooperative Extension System 4-H Youth Development program prohibits discrimination in education, employment, and in the provision of services on account of race, ethnicity, religion, sex, age, marital status, national origin, ancestry, sexual orientation, disabled veteran status, physical or mental disability, mental retardation, [and] other specifically covered mental disabilities, [and criminal records that are not job related].

2008 4-H BEEF STEER SHOW ENTRY APPLICATION  
NEW ENGLAND 4-H PROGRAM – THE BIG E

This entry is made in accordance with the Rules and Regulations governing this program. DETACH IT from the rules and submit it to your club agent. PRINT !!! Do not omit any information requested.

FULL GIVEN NAME \_\_\_\_\_ TEL. NO. \_\_\_\_\_

COMPLETE MAILING ADDRESS \_\_\_\_\_

CITY \_\_\_\_\_ STATE \_\_\_\_\_ ZIP \_\_\_\_\_ E-MAIL \_\_\_\_\_

MEMBER'S BIRTHDATE \_\_\_\_\_ AGE AS OF \_\_\_\_\_ SEX \_\_\_\_\_ T-Shirt Size \_\_\_\_\_  
Month Day Year 1/1/2008

Sire's Breed \_\_\_\_\_ Dam's Breed \_\_\_\_\_ Name of Breeder \_\_\_\_\_

Steer's Name \_\_\_\_\_ Birth date of Animal \_\_\_\_\_

Did you breed this calf yourself? \_\_\_\_\_ if not, date you acquired him? \_\_\_\_\_

If purchased, from whom? \_\_\_\_\_

Include breeder's farm name (if known)

Scale weight when acquired \_\_\_\_\_ lbs. Price per lb. \_\_\_\_\_

This animal's left ear was tagged with The Big E eartag number \_\_\_\_\_ on \_\_\_\_\_  
By whom? \_\_\_\_\_ DATE

We have read the rules and certify that the facts contained herein are true. The applicant meets the eligibility requirements of the rules and agrees to participate in all activities of the 4-H Beef Show at the Exposition. We concur with the rules pertaining to the terms of the auction sale as specified in the regulations.

\_\_\_\_\_  
Signature of 4-H Club Member

\_\_\_\_\_  
Signature of Parent or Guardian

\_\_\_\_\_  
Signature of 4-H Local Club Leader

\_\_\_\_\_  
Signature of 4-H Staff

\_\_\_\_\_  
Signature of Committee Representative

Original Entries must be received at State office no later than February 1 for steer projects. Entries must be postmarked from the State Office by February 10 to the Exposition.

The Cooperative Extension System 4-H Youth Development program prohibits discrimination in education, employment, and in the provision of services on account of race, ethnicity, religion, sex, age, marital status, national origin, ancestry, sexual orientation, disabled veteran status, physical or mental disability, mental retardation, [and] other specifically covered mental disabilities, [and criminal records that are not job related].